

Manufactured by  
Veteran Grown LLC  
1527 Wilma Rudolph Blvd  
Clarksville, TN 37040  
931.444.1999



### Sample 616-071824-349

Purple Runtz

Batch/Lot # PR66999

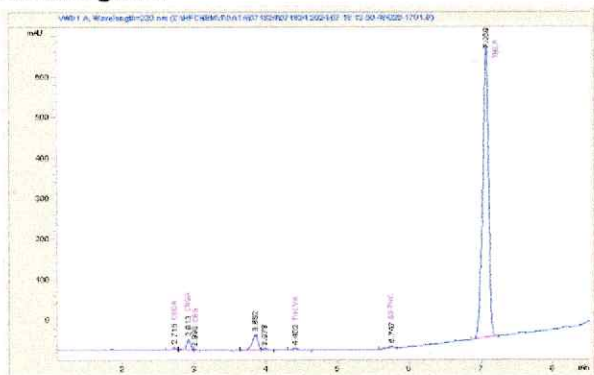
Sample Submitted: 07-18-2024; Report Date: 07-24-2024

## Purple Runtz

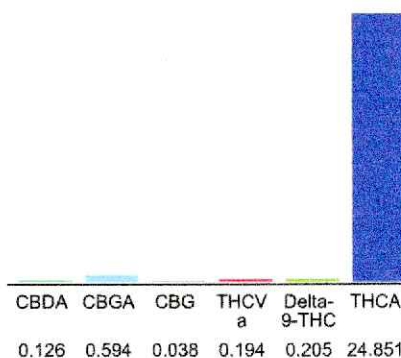
Plant Material: Hemp Flower

### Batch/Lot # PR66999

### Chromatogram



### Cannabinoid Profile



### Cannabinoid Profile by HPLC

**0.21%**  
Delta-9-THC

**0.00%**  
CBD

**26.01%**  
Total Cannabinoids

Cannabinoid	% wt	mg/g
CBDA	0.126	1.26
CBGA	0.594	5.94
CBG	0.038	0.38
THCVa	0.194	1.94
Delta-9-THC	0.205	2.05
THCA	24.85	248.51
<b>Total Cannabinoids</b>	<b>26.01</b>	<b>260.1</b>
<b>Calculated Total THC</b>	<b>22.00</b>	<b>219.99</b>
<b>Calculated CBD Yield</b>	<b>0.11</b>	<b>1.11</b>
Calculated Total THC = Delta-9-THC + 0.877 * THCA		
Calculated Maximum CBD Yield = CBD + 0.877 * CBDA		

**Marin Analytics, LLC**  
250 Bel Marin Keys Blvd, Suite D4  
Novato, CA 94949

833-321-TEST / info@marinanalytics.com



**Mike Clemmons**  
Lab Manager